

CineFlash™ Magazine (Accessory for MIRO Cameras)

CineFlash™ Access from a PC

Instructions to obtain & install the necessary drivers for using the CineFlash™ magazine on a Windows operating system.

Abstract:

The CineFlash™ magazine is formatted using the Linux EXT2 file system format. The CineFlash magazine (via the CineFlash Dock) can be recognized by a PC computer that has the appropriate driver installed. There is an installer (EXT2FSD) available for download that will install the necessary driver as well as provide an interface for recognizing a disk, assigning a drive letter, and various other options.

In addition to the EXT2FSD driver & utility, there is another utility (HotSwap!) that VRI has tested which will allow the user to quickly and safely unmount the CineFlash drive

Procedure:

Mounting Instructions

1. Use the following link to download the 'Ext2Fsd' installer (Ext2Fsd-0.51.exe)
 - a. http://sourceforge.net/projects/ext2fsd/files/latest/download?source=files_text
2. Right-click on the 'Ext2Fsd-0.51.exe' and select 'Run as Administrator'
3. Proceed through the installer's prompts to install the program using the default installation options.
4. Use the following link to download the 'HotSwap!' mount utility
 - a. <http://mt-naka.com/hotswap/file/HotSwap!%206.0.0.0.ZIP> (Win Vista/7)
 - b. <http://mt-naka.com/hotswap/file/HotSwap!%205.0.0.0.ZIP> (WinXp)

5. Extract the HotSwap! utility that corresponds to your OS (32 or 64 bit) from the ZIP archive and place the 'HotSwap!.EXE' file in any directory (the application can be run from any directory)
6. Right-click on the Ext2 Volume Manager application shortcut created during installation and select 'Run as Administrator' (Running the program in Admin mode is required.)
7. From the top menu strip, select:
 - a. Tools > Service Management (see Figure 1)

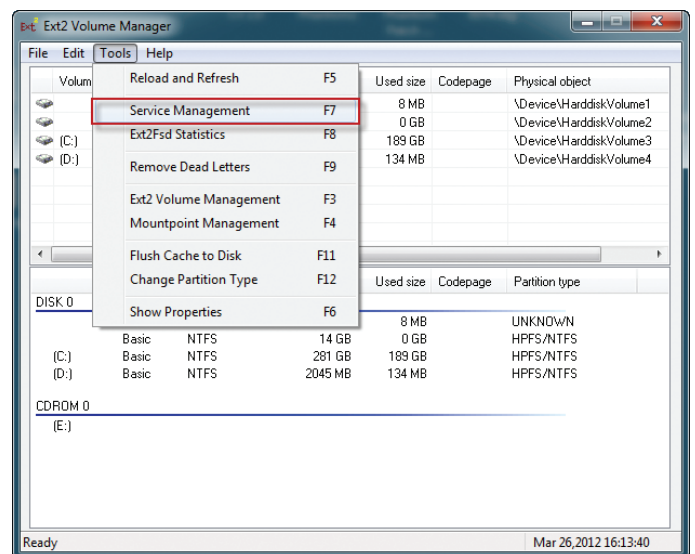


Figure 1

CineFlash™ Access from a PC

- 8. Left-click the 'Start' button as indicated (see Figure 2)
- 9. Left-click the 'Apply' button as indicated (see Figure 2)

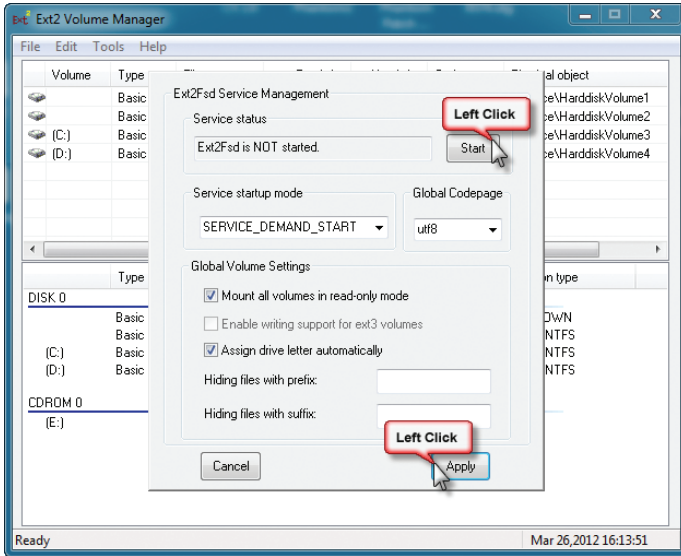


Figure 2

- 10. Connect the CineFlash Dock to power
- 11. Connect the CineFlash Dock to the PC via the eSATA cable
- 12. From the top menu strip, select:
 - a. Tools > Reload and Refresh (see Figure 3)

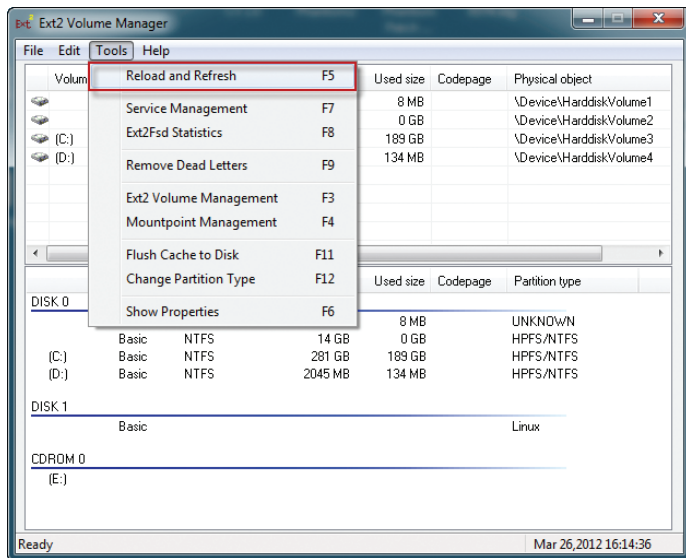


Figure 3

The CineFlash should now show up as an EXT2 drive in the top list (see Figure 4)

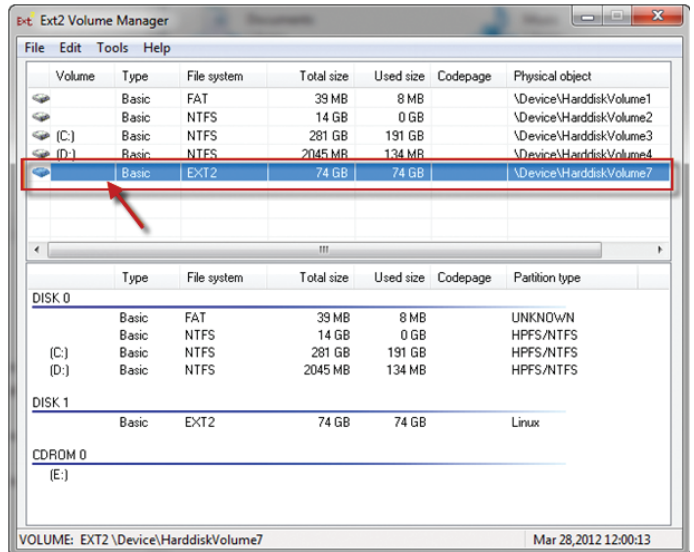


Figure 4

- 13. Left-click on the line that corresponds to the EXT2 drive to select the CineFlash volume
- 14. Once the volume is selected (shown with blue highlight), right-click on this line to bring up a sub-menu and select 'Change Drive Letter' (see Figure 5)

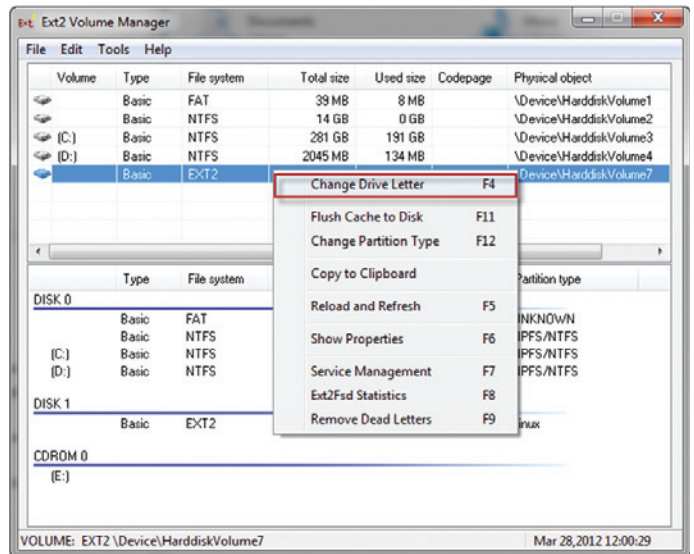


Figure 5

- Once the 'Change Drive Letter' window opens, left-click the 'Add' button (see Figure 6)

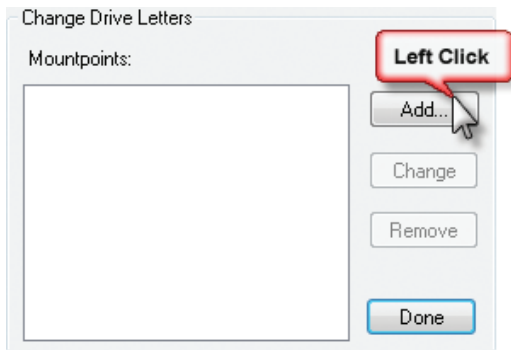


Figure 6

- Select an unused drive letter from the dropdown list. (see Figure 7)
- Click the 'OK' button (see Figure 7)

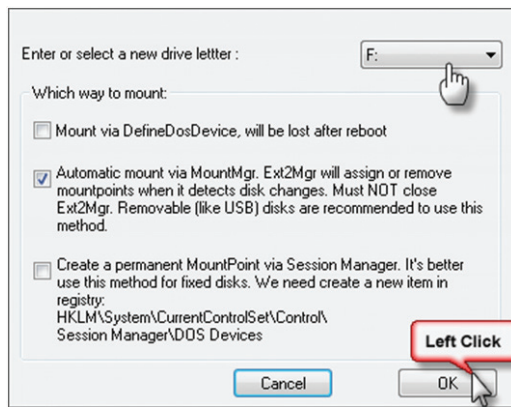


Figure 7

- Click the 'Done' button (see Figure 8)

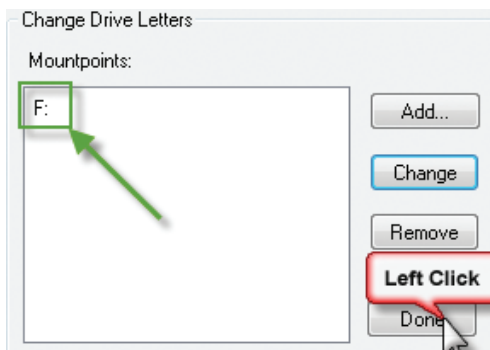


Figure 8

The drive should now have a letter assigned to it. (see Figure 9)

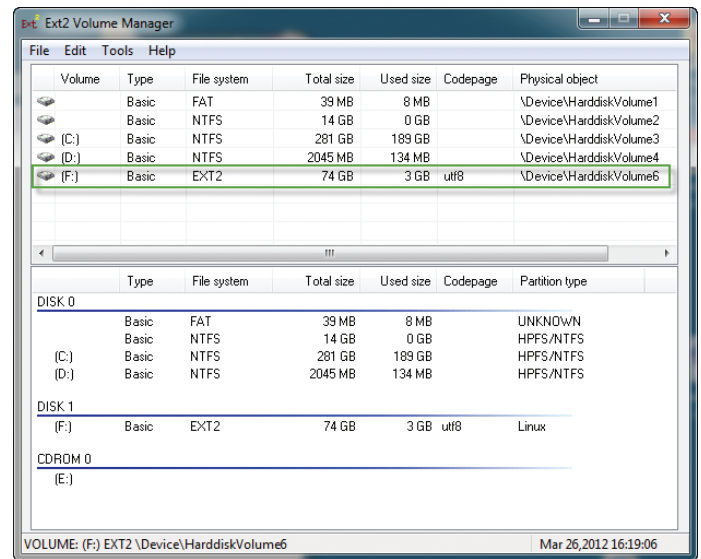


Figure 9

- Open the Windows Explorer (file browser) (see Figure 10)
 - The CineFlash magazine should now show up as a drive as indicated by the green arrow
 - Cine files should be listed on the right side as indicated by the orange arrow

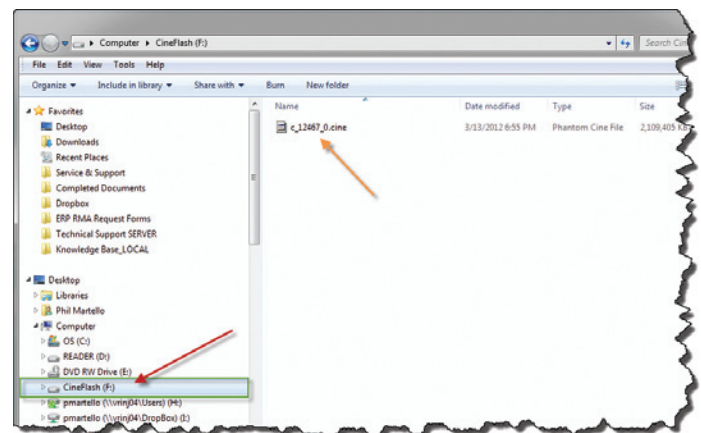


Figure 10

CineFlash™ Access from a PC

NOTES/ALERTS

20. Right-click on the CineFlash volume and select 'Ext Management' (see Figure 11)

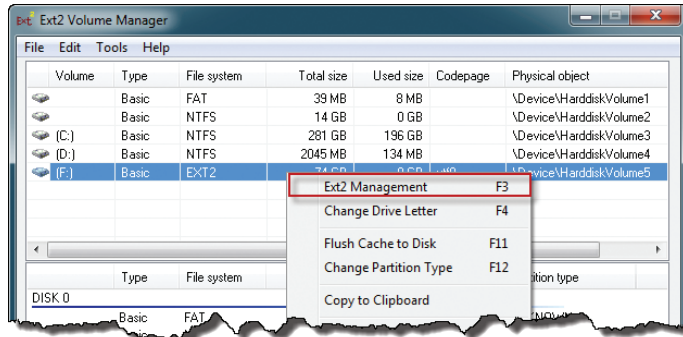


Figure 11

- 21. Un-check the 'Mount volume in readonly mode' box (see Figure 12)
- 22. Click the 'Apply' button (see Figure 12)
- 23. Click the 'Cancel' button (see Figure 12)
 - a. The configuration changes are immediate and should not require re-mounting.

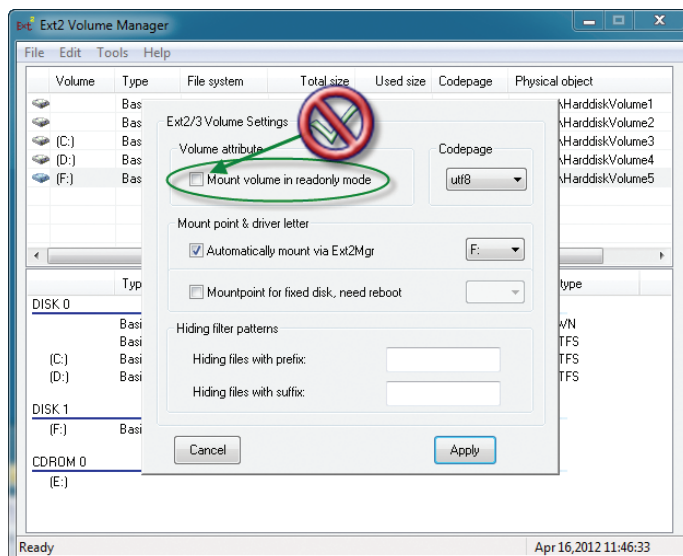


Figure 12

Un-Mounting Instructions

1. Hover the mouse cursor over the 'HotSwap!' application icon within the Windows Notification Tray. (see Figure 13)

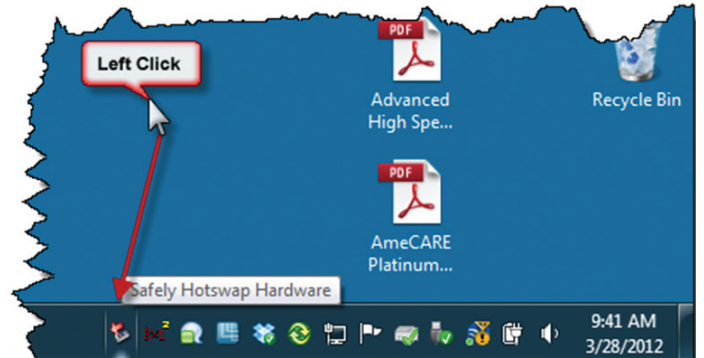


Figure 13

2. Left-click the 'Hotswap!' icon and select 'Safely hotswap <device name>' as indicated
 - a. The CineFlash magazine can now be safely removed from the dock (see Figure 14)

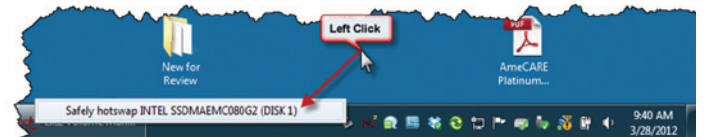


Figure 14



100 Dey Road
 Wayne, NJ 07470 USA
 +1.973.696.4500
 phantom@visionresearch.com

www.visionresearch.com